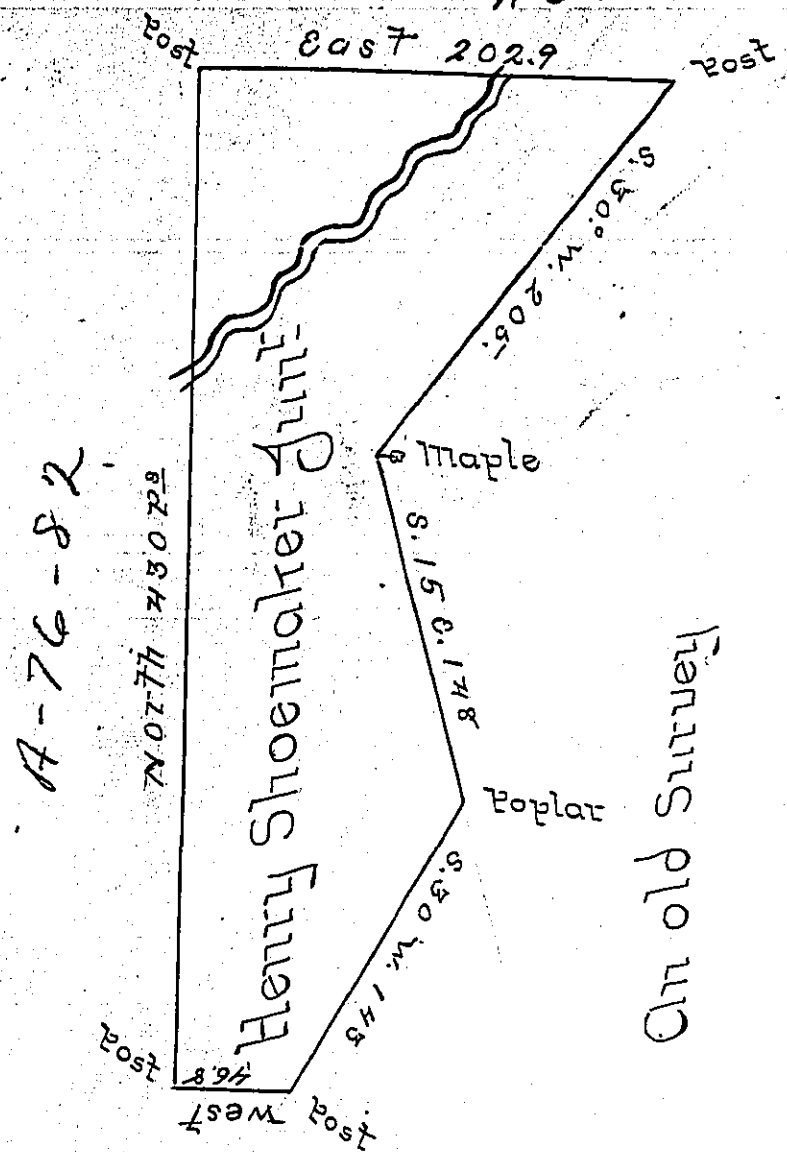


Thomas Morris  
A 57-185



Charles  
Drvin  
A 29-94

Situated on the Waters of Conemaugh in Quemahoning  
 Township Bedford County Containing 519 Acres & 67 Per-  
 ches & allowance of six per Cent for Roads &c. Surveyed  
 the 14<sup>th</sup> day of November 1794 for Henry Shoemaker  
 on Warrant dated the 30<sup>th</sup> day of May 1793  
 George Woods Junr. S.S.  
 Daniel Brodhead Esq. S.S.

Now Somerset County

IN TESTIMONY that the above is a copy of the original remaining on file in  
 the Department of Internal Affairs of Pennsylvania, made  
 conformably to an Act of Assembly approved the 16th day of  
 February, 1833, I have hereunto set my Hand and caused  
 the Seal of said Department to be affixed at Harrisburg,  
 this first day of May 1900.

*James W. Latta*  
 Secretary of Internal Affairs.